

Alberta Live Animal Markets: Visit individual market websites for more information about applicable auction fees and upcoming sales.

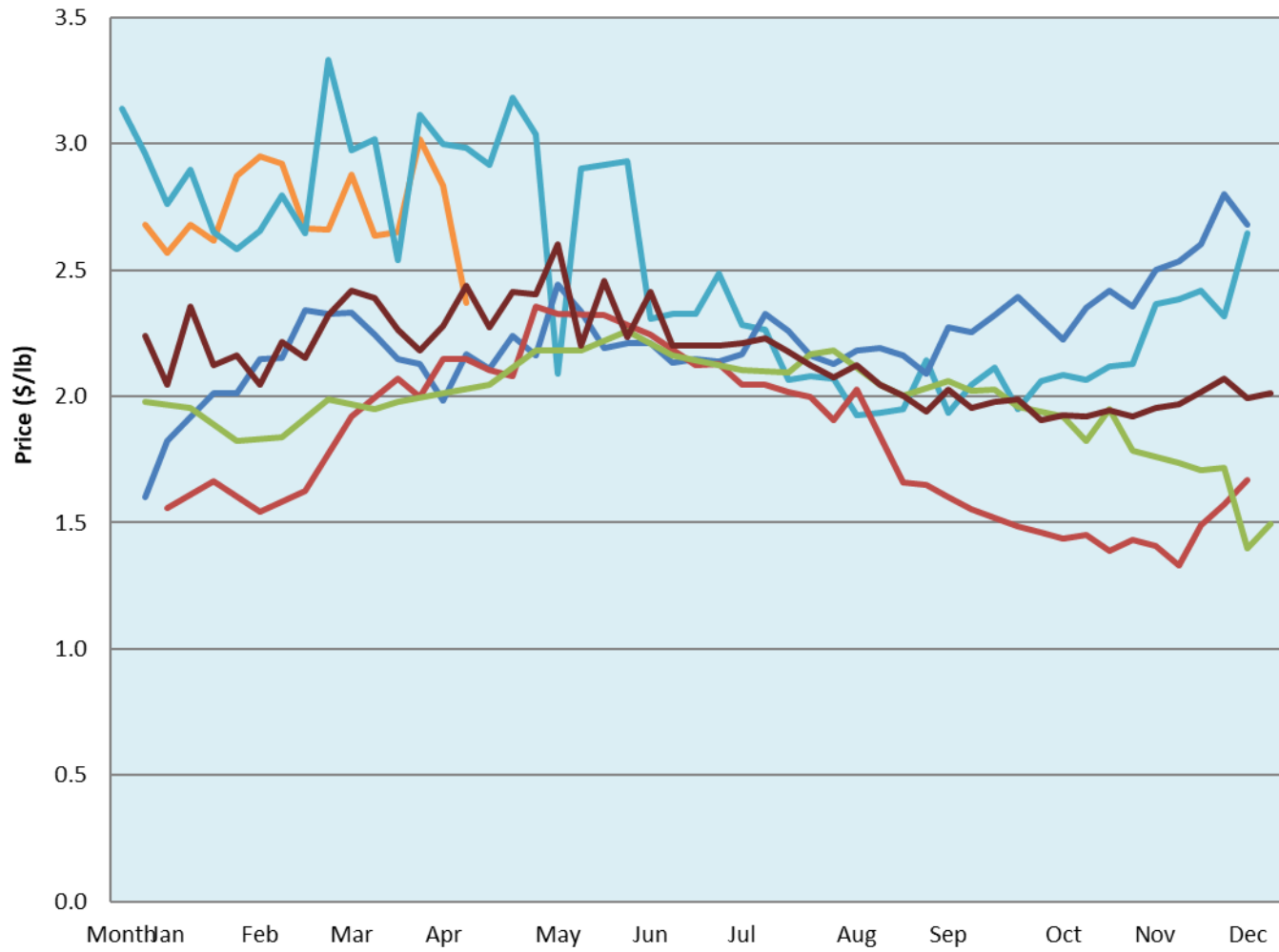
Date	Sale	Lambs (\$/lb)			Lambs (\$/lb)			Lambs (\$/lb)			Sheep(\$/lb): Bred ewes \$/hd		Total Head		
		Weight (lbs)	Head	low - high	Weight (lbs)	Head	low - high	Weight (lbs)	Head	low - high	low - high	low - high			
No sale this week	Beaver Hill www.beaverhillauctions.com	0-54: wool	-	0.00 - 0.00	70-85: wool	-	0.00 - 0.00	86-105:wool	-	0.00 - 0.00	Ewes: wool	0.00 - 0.00	0		
		0-54: hair	-	0.00 - 0.00				86-105:hair			-	0.00 - 0.00		Ewes: hair	0.00 - 0.00
		55-69: wool	-	0.00 - 0.00	70-85: hair	-	0.00 - 0.00	106+:wool	-	0.00 - 0.00	Rams: wool	0.00 - 0.00			
		55-69: hair	-	0.00 - 0.00				106+:hair			-	0.00 - 0.00		Rams: hair	0.00 - 0.00
			-								-			Bred Ewes	0.00 - 0.00
								-	0.00 - 0.00	Ewe&Lamb(s)	0.00 - 0.00				
19-Apr-22	VJV Westlock www.vjvauction.com	0-69: wool	-	2.45 - 2.85	70-85: wool	-	2.75 - 3.27	86-105: wool	-	2.5 - 3.00	Ewes: wool	1.40 - 1.75	161		
			-			-		86-105: hair	-	2.3 - 2.95	Ewes: hair	- - -			
			-			-			-		Rams: wool	1.30 - 1.70			
		0-69: hair	-	2.2 - 2.70	70-85: hair	-	2.3 - 2.90	106+: wool	-	- - -	Rams: hair	- - -			
			-			-		106+: hair	-	- - -	Bred Ewes:wool	- - -			
							-	- - -	Ewe&Lamb:hair	- - -					
19-Apr-22	Olds Auction www.oldsauktion.com	30-50	-	3.52 - 3.80	70-80	-	3.37 - 3.52	90-100	-	3.26 - 3.40	Ewes	1.43 - 1.77	128 (incl.goats)		
		50-60	-	3.42 - 4.80	80-90	-	3.29 - 3.43	100-110	-	2.43 - 2.80	Rams	1.37 - 2.17			
		60-70	-	3.37 - 3.52				110+	-	1.94 - 2.80	Bred Ewes	- - -			
Information unavailable	Picture Butte www.picturebutteauction.ca							Feeder	-	- - -	Slaughter Ewes	- - -	-		
								Slaughter	-	- - -	Feeder Ewes	- - -			
											Ewe&lamb(s)	- - -			
											Bred ewes	- - -			
											Rams	- - -			

Ontario Live Animal Markets

18-Apr-22	OSI www.ontariosheep.org	0-50	117	4.10 - 5.17	65-80	345	3.88 - 4.60	95-110	106	3.67 - 3.77	Sheep	1.00 - 2.65	1545
		50-64	381	3.8 - 4.83	80-95	105	3.48 - 3.98	110+	23	2.6 - 2.65			
19-Apr-22	OLEX www.ontariosheep.org	0-50	152	4.25 - 5.90	65-79	569	4.15 - 4.80	95-109	601	3.65 - 3.88	Sheep	0.70 - 1.93	3123
		50-64	619	4.58 - 5.23	80-94	528	3.65 - 4.08	110+	246	3.30 - 3.60			
18-Apr-22	Embrun www.ontariosheep.org	0-50	9	4.40 - 4.75	65-79	118	4.34 - 4.46	95-109	29	3.87 - 4.10	Sheep	1.40 - 2.05	377
		50-64	53	4.20 - 4.65	80-94	121	4.05 - 4.38	110+	19	3.6 - 3.75			
14-Apr-22	Brussels www.ontariosheep.org	0-50	39	3.8 - 5.05	65-79	75	4.49 - 4.70	95-109	43	3.975 - 4.02	Sheep	1.30 - 2.60	446
		50-64	137	4.7 - 5.00	80-94	58	3.95 - 4.18	110+	8	1.95 - 2.50			

Alberta Lamb Producers does not endorse individual markets or verify prices provided.

Trends* in auction price for heavy lambs in Alberta



— 2022
 — 2021
 — 2020
 — 2019
 — 2018
 — 5 yr ave

*Due to differences among auctions, prices are reported as 'trends' rather than averages.
 This graph is updated on weeks with two or more markets reporting prices.