

Alberta Live Animal Markets: Visit individual market websites for more information about applicable auction fees and upcoming sales.

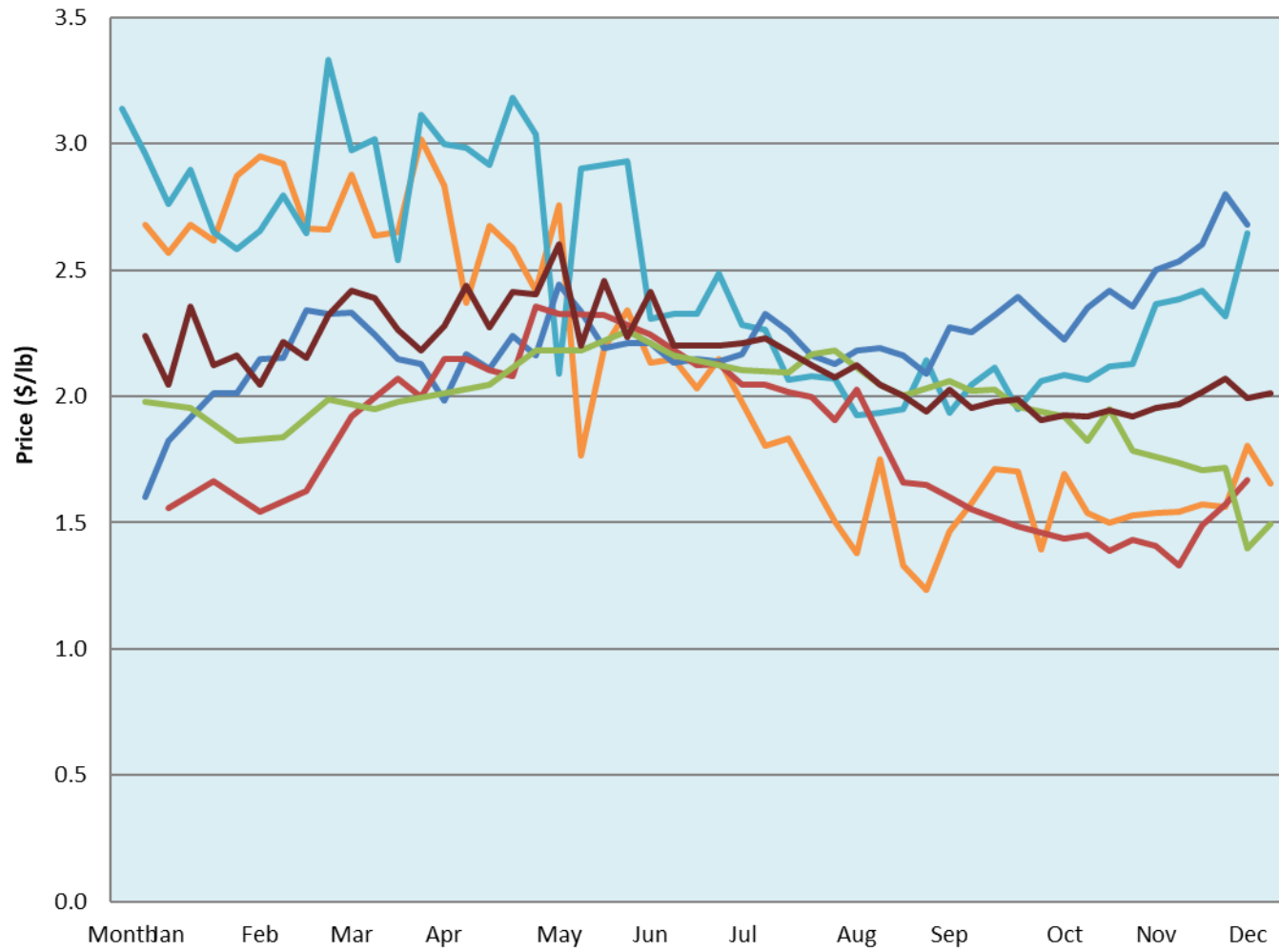
Date	Sale	Lambs (\$/lb)			Lambs (\$/lb)			Lambs (\$/lb)			Sheep(\$/lb): Bred ewes \$/hd		Total Head		
		Weight (lbs)	Head	low - high	Weight (lbs)	Head	low - high	Weight (lbs)	Head	low - high	low - high				
Information unavailable	Beaver Hill www.beaverhillauctions.com	0-54: wool	-	0.00 - 0.00	70-85: wool	-	0.00 - 0.00	86-105:wool	-	0.00 - 0.00	Ewes: wool	0.00 - 0.00	0		
		0-54: hair	-	0.00 - 0.00				86-105:hair			-	0.00 - 0.00		Ewes: hair	0.00 - 0.00
		55-69: wool	-	0.00 - 0.00	70-85: hair	-	0.00 - 0.00	106+:wool	-	0.00 - 0.00	Rams: wool	0.00 - 0.00			
		55-69: hair	-	0.00 - 0.00				106+:hair			-	0.00 - 0.00		Rams: hair	0.00 - 0.00
			-								-			Bred Ewes	0.00 - 0.00
								-	0.00 - 0.00	Ewe&Lamb(s)	0.00 - 0.00				
No sale this week	VJV Westlock www.vjvauction.com	0-69: wool	-	- - -	70-85: wool	-	- - -	86-105: wool	-	- - -	Ewes: wool	- - -	-		
			-					86-105: hair			-	- - -		Ewes: hair	- - -
		0-69: hair	-	- - -	70-85: hair	-	- - -	106+: wool	-	- - -	Rams: wool	- - -			
			-					106+: hair			-	- - -		Rams: hair	- - -
			-								-			Bred Ewes:wool	- - -
								-	- - -	Ewe&Lamb:hair	- - -				
20-Dec-22	Olds Auction www.oldsauktion.com	30-50	-	1.3 - 1.80	70-80	-	1.3 - 2.19	90-100	-	1.47 - 1.96	Ewes	0.85 - 1.12	40 (incl.goats)		
		50-60	-	1.27 - 1.84	80-90	-	1.47 - 2.06	100-110	-	1.6 - 1.91	Rams	1.27 - 1.61			
		60-70	-	1.31 - 1.91				110+	-	1.34 - 1.61	Bred Ewes	- - -			
17-Dec-22	Picture Butte www.picturebutteauction.ca							Feeder	-	1.85 - 2.10	Slaughter Ewes	- - -	-		
								Slaughter	-	1.75 - 1.91	Feeder Ewes	- - -			
											Ewe&lamb(s)	- - -			
											Bred ewes	- - -			
										Rams	1.00 - 1.33				

Ontario Live Animal Markets

19-Dec-22	OSI www.ontariosheep.org	0-50	81	1.70 - 3.65	65-80	656	2.00 - 3.70	95-110	146	2.025 - 2.48	Sheep	1.25 - 2.20	2235
		50-64	307	2 - 3.55	80-95	389	1.95 - 2.43	110+	27	1.95 - 2.18			
20-Dec-22	OLEX www.ontariosheep.org	0-50	123	3.53 - 3.75	65-79	572	2.55 - 3.38	95-109	480	2.45 - 3.48	Sheep	1.33 - 2.25	2569
		50-64	333	2.85 - 4.03	80-94	406	2.38 - 3.28	110+	151	1.85 - 2.55			
19-Dec-22	Embrun www.ontariosheep.org	0-50	45	1.40 - 2.85	65-79	239	2.36 - 3.05	95-109	68	1.87 - 2.50	Sheep	0.99 - 1.50	771
		50-64	132	1.70 - 3.00	80-94	153	2.4 - 2.90	110+	19	1.86 - 2.10			
15-Dec-22	Brussels www.ontariosheep.org	0-50	34	3.25 - 3.85	65-79	273	2.325 - 3.18	95-109	119	2.2 - 2.28	Sheep	1.75 - 2.30	1113
		50-64	443	3.1 - 3.69	80-94	147	2.25 - 2.70	110+	18	1.85 - 2.13			

Alberta Lamb Producers does not endorse individual markets or verify prices provided.

Trends* in auction price for heavy lambs in Alberta



— 2022
 — 2021
 — 2020
 — 2019
 — 2018
 — 5 yr ave

*Due to differences among auctions, prices are reported as 'trends' rather than averages.
 This graph is updated on weeks with two or more markets reporting prices.