

**Alberta Live Animal Markets: Visit individual market websites for more information about applicable auction fees and upcoming sales.**

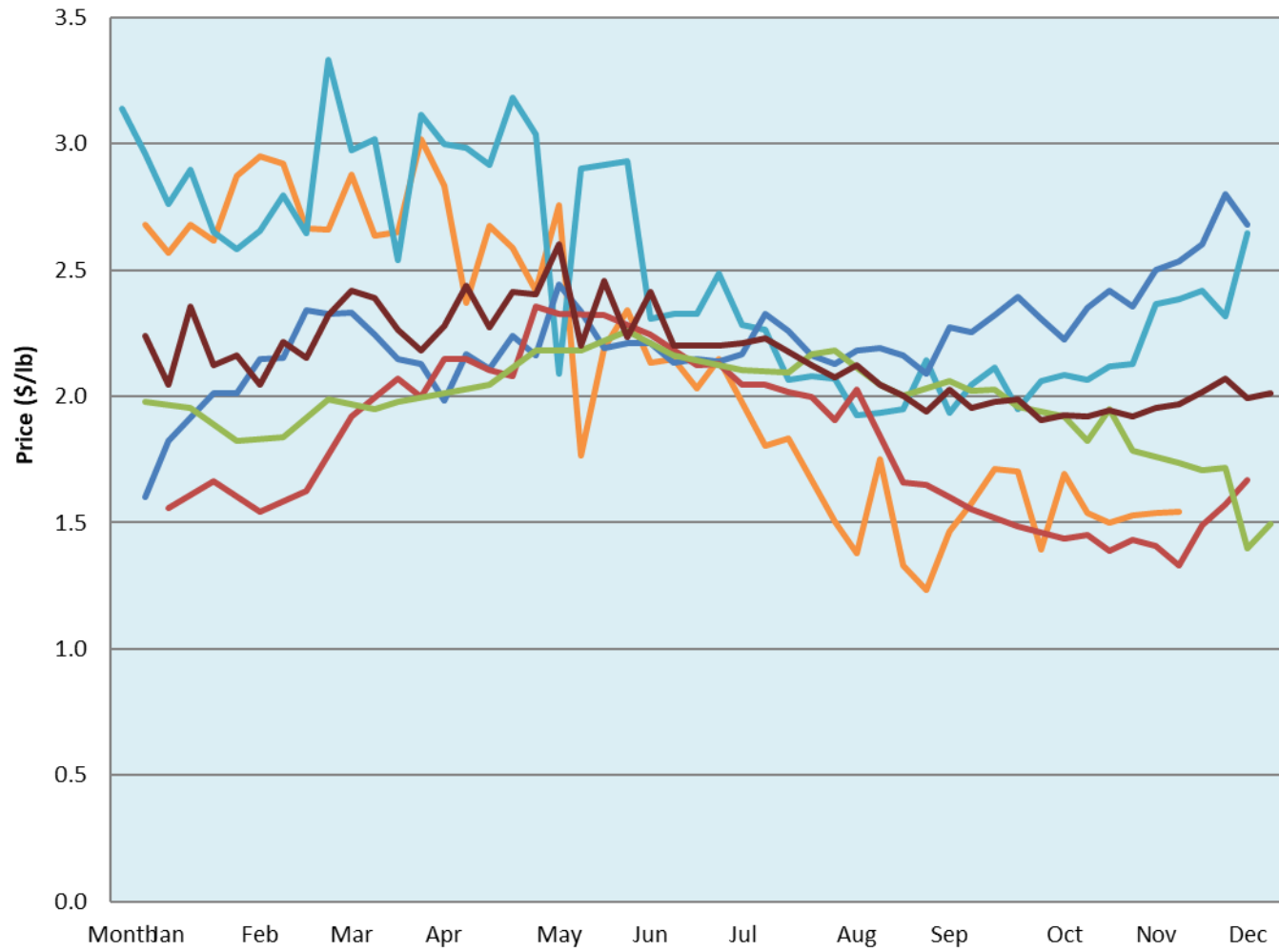
Date	Sale	Lambs (\$/lb)			Lambs (\$/lb)			Lambs (\$/lb)			Sheep(\$/lb): Bred ewes \$/hd		Total Head		
		Weight (lbs)	Head	low - high	Weight (lbs)	Head	low - high	Weight (lbs)	Head	low - high	low - high				
21-Nov-22	Beaver Hill <a href="http://www.beaverhillauctions.com">www.beaverhillauctions.com</a>	0-54: wool	-	1.80 - 2.25	70-85: wool	-	1.80 - 2.30	86-105:wool	-	1.65 - 2.05	Ewes: wool	1.35 - 1.65	1428		
		0-54: hair	-	1.65 - 2.05				86-105:hair			-	1.60 - 1.80		Rams: wool	1.12 - 1.54
		55-69: wool	-	2.00 - 2.40	70-85: hair	-	1.70 - 2.00	106+:wool	-	1.60 - 1.98	Rams: hair	1.23 - 1.71			
		55-69: hair	-	1.70 - 2.07				106+:hair			-	1.30 - 1.67		Bred Ewes	1.95 - 2.50
			-								-			Ewe&Lamb(s)	0.00 - 0.00
No sale this week	VJV Westlock <a href="http://www.vjvauction.com">www.vjvauction.com</a>	0-69: wool	-	- - -	70-85: wool	-	- - -	86-105: wool	-	- - -	Ewes: wool	- - -	-		
			-					86-105: hair			-	- - -		Rams: wool	- - -
		0-69: hair	-	- - -	70-85: hair	-	- - -	106+: wool	-	- - -	Rams: hair	- - -			
			-					106+: hair			-	- - -		Bred Ewes:wool	- - -
			-								-			Ewe&Lamb:hair	- - -
22-Nov-22	Olds Auction <a href="http://www.oldsauktion.com">www.oldsauktion.com</a>	30-50	-	1.66 - 1.81	70-80	-	1.65 - 2.14	90-100	-	1.77 - 1.90	Ewes	0.85 - 1.12	279  (incl.goats)		
		50-60	-	2.08 - 2.21	80-90	-	1.89 - 1.98	100-110	-	1.5 - 1.81	Rams	1.27 - 1.61			
		60-70	-	2.17 - 2.35				110+	-	1.26 - 1.47	Bred Ewes	- - -			
19-Nov-22	Picture Butte <a href="http://www.picturebutteauction.ca">www.picturebutteauction.ca</a>							Feeder	-	1.3 - 1.75	Slaughter Ewes	0.75 - 0.85	-		
								Slaughter	-	1.35 - 1.61	Feeder Ewes	- - -			
											Ewe&lamb(s)	- - -			
											Bred ewes	- - -			
										Rams	- - -				

**Ontario Live Animal Markets**

21-Nov-22	OSI <a href="http://www.ontariosheep.org">www.ontariosheep.org</a>	0-50	8	1.00 - 3.00	65-80	317	2.88 - 3.23	95-110	248	2.075 - 2.38	Sheep	1.70 - 2.20	1281
		50-64	140	2.6 - 3.20	80-95	163	2.20 - 2.81	110+	50	2.125 - 2.40			
22-Nov-22	OLEX <a href="http://www.ontariosheep.org">www.ontariosheep.org</a>	0-50	60	2.90 - 4.00	65-79	305	2.60 - 3.35	95-109	535	2.12 - 2.45	Sheep	1.60 - 2.43	2394
		50-64	202	2.75 - 3.60	80-94	543	2.25 - 2.58	110+	199	1.78 - 2.29			
21-Nov-22	Embrun <a href="http://www.ontariosheep.org">www.ontariosheep.org</a>	0-50	3	2.95 - 2.95	65-79	128	2.55 - 2.88	95-109	25	2.6 - 2.68	Sheep	1.29 - 1.45	447
		50-64	89	2.45 - 3.10	80-94	113	2.45 - 2.70	110+	5	1.42 - 1.80			
17-Nov-22	Brussels <a href="http://www.ontariosheep.org">www.ontariosheep.org</a>	0-50	0	0 - 0.00	65-79	34	2.35 - 3.25	95-109	73	2.4 - 2.60	Sheep	1.15 - 2.20	281
		50-64	5	1.75 - 3.10	80-94	84	2.45 - 2.89	110+	8	2.2 - 2.48			

**Alberta Lamb Producers does not endorse individual markets or verify prices provided.**

### Trends\* in auction price for heavy lambs in Alberta



— 2022 — 2021 — 2020 — 2019 — 2018 — 5 yr ave

\*Due to differences among auctions, prices are reported as 'trends' rather than averages.  
This graph is updated on weeks with two or more markets reporting prices.