

Alberta Live Animal Markets: Visit individual market websites for more information about applicable auction fees and upcoming sales.

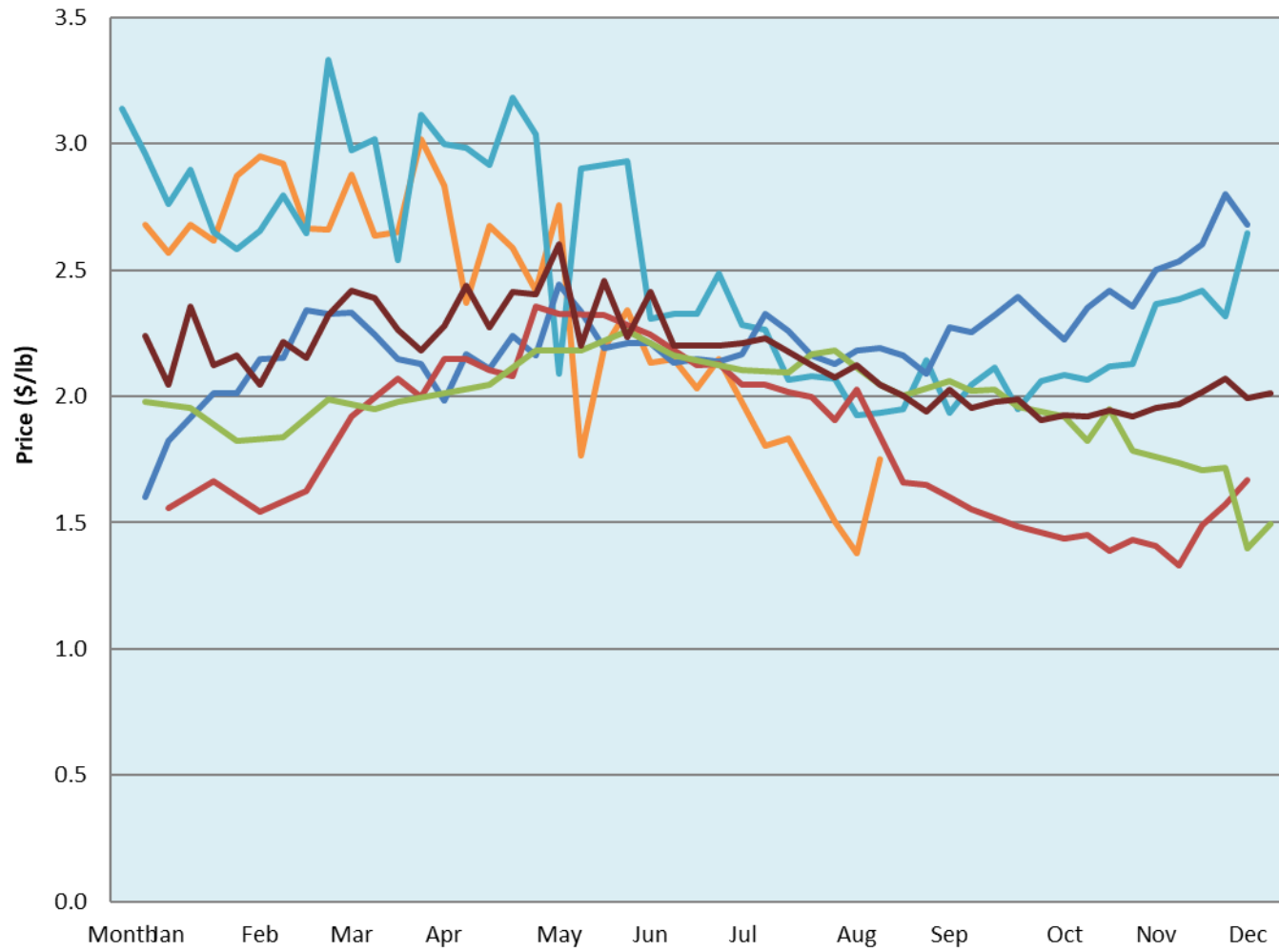
Date	Sale	Lambs (\$/lb)			Lambs (\$/lb)			Lambs (\$/lb)			Sheep(\$/lb): Bred ewes \$/hd		Total Head		
		Weight (lbs)	Head	low - high	Weight (lbs)	Head	low - high	Weight (lbs)	Head	low - high	low - high				
22-Aug-22	Beaver Hill www.beaverhillauctions.com	0-54: wool	-	1.50 - 1.90	70-85: wool	-	1.69 - 2.15	86-105:wool	-	1.60 - 1.97	Ewes: wool	0.85 - 1.74	746		
		0-54: hair	-	1.30 - 1.80				86-105:hair			-	1.50 - 1.75		Ewes: hair	0.87 - 1.50
		55-69: wool	-	1.70 - 2.20				106+:wool			-	1.50 - 2.00		Rams: wool	0.90 - 1.15
		55-69: hair	-	1.40 - 1.90	70-85: hair	-	1.60 - 2.00	106+:hair	-	0.87 - 1.50	Rams: hair	1.00 - 1.15			
			-					Bred Ewes			0.00 - 0.00				
			-					Ewe&Lamb(s)			0.00 - 0.00				
No sale this week	VJV Westlock www.vjvauction.com	0-69: wool	-	---	70-85: wool	-	---	86-105: wool	-	---	Ewes: wool	---	-		
			-					86-105: hair			-	---		Ewes: hair	---
			-					106+: wool			-	---		Rams: wool	---
		0-69: hair	-	---	70-85: hair	-	---	106+: hair	-	---	Rams: hair	---			
			-					Bred Ewes:wool			---				
			-					Ewe&Lamb:hair			---				
Information unavailable	Olds Auction www.oldsauktion.com	30-50	-	---	70-80	-	---	90-100	-	---	Ewes	---	-		
		50-60	-	---				80-90			-	---		100-110	-
		60-70	-	---				110+	-	---	Bred Ewes	---		(incl.goats)	
Information unavailable	Picture Butte www.picturebutteauction.ca							Feeder	-	---	Slaughter Ewes	---	-		
								Slaughter	-	---	Feeder Ewes	---			
											Ewe&lamb(s)	---			
											Bred ewes	---			
											Rams	---			

Ontario Live Animal Markets

22-Aug-22	OSI www.ontariosheep.org	0-50	56	1.50 - 2.25	65-80	197	1.80 - 2.23	95-110	213	1.7 - 1.88	Sheep	1.00 - 1.90	1518
		50-64	168	2.25 - 2.45	80-95	204	1.80 - 2.00	110+	80	1.5 - 1.68			
23-Aug-22	OLEX www.ontariosheep.org	0-50	157	3.00 - 3.50	65-79	365	2.00 - 2.60	95-109	1388	1.73 - 2.05	Sheep	1.13 - 1.85	3018
		50-64	126	2.50 - 3.15	80-94	483	1.77 - 2.20	110+	176	1.53 - 1.84			
22-Aug-22	Embrun www.ontariosheep.org	0-50	0	0.00 - 0.00	65-79	89	2.55 - 2.74	95-109	28	2.22 - 2.45	Sheep	1.10 - 1.34	289
		50-64	20	2.05 - 2.55	80-94	111	2.35 - 2.70	110+	18	1.95 - 2.12			
Information Unavailable	Brussels www.ontariosheep.org	0-50	0	0 - 0.00	65-79	0	0 - 0.00	95-109	0	0 - 0.00	Sheep	0.00 - 0.00	0
		50-64	0	0 - 0.00	80-94	0	0 - 0.00	110+	0	0 - 0.00			

Alberta Lamb Producers does not endorse individual markets or verify prices provided.

Trends* in auction price for heavy lambs in Alberta



— 2022 — 2021 — 2020 — 2019 — 2018 — 5 yr ave

*Due to differences among auctions, prices are reported as 'trends' rather than averages.
This graph is updated on weeks with two or more markets reporting prices.