

Alberta Live Animal Markets: Visit individual market websites for more information about applicable auction fees and upcoming sales.

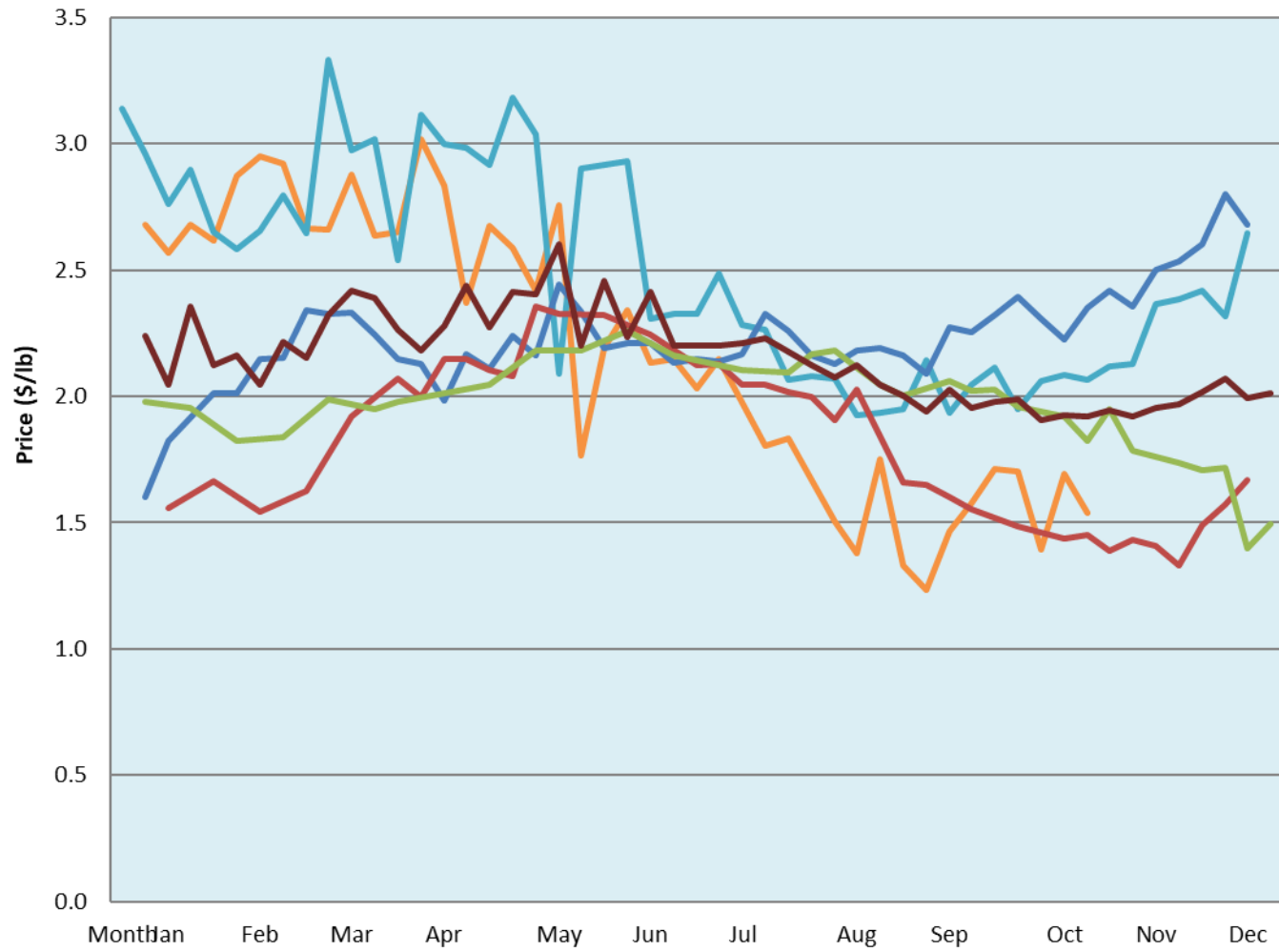
Date	Sale	Lambs (\$/lb)			Lambs (\$/lb)			Lambs (\$/lb)			Sheep(\$/lb): Bred ewes \$/hd		Total Head		
		Weight (lbs)	Head	low - high	Weight (lbs)	Head	low - high	Weight (lbs)	Head	low - high	low - high				
24-Oct-22	Beaver Hill www.beaverhillauctions.com	0-54: wool	-	2.00 - 2.63	70-85: wool	-	2.00 - 2.48	86-105:wool	-	1.65 - 2.14	Ewes: wool	0.90 - 1.60	1144		
		0-54: hair	-	1.70 - 2.10				86-105:hair			-	1.55 - 1.90		Rams: wool	1.01 - 1.25
		55-69: wool	-	2.10 - 2.55	70-85: hair	-	1.75 - 2.05	106+:wool	-	1.50 - 1.78	Rams: hair	1.08 - 1.65			
		55-69: hair	-	1.70 - 2.05				106+:hair			-	0.90 - 1.75		Bred Ewes	1.95 - 2.50
			-								-			Ewe&Lamb(s)	0.00 - 0.00
25-Oct-22	VJV Westlock www.vjvauction.com	0-69: wool	-	2.09 - 2.50	70-85: wool	-	1.95 - 2.35	86-105: wool	-	1.9 - 2.29	Ewes: wool	1.22 - 1.50	455		
			-		70-85: hair	-	1.85 - 2.20	86-105: hair	-	1.75 - 2.15	Ewes: hair	1.00 - 1.35			
		0-69: hair	-	1.98 - 2.40				106+: wool	-	- - -	Rams: wool	0.97 - 1.55			
			-		106+: hair	-	- - -	Rams: hair	0.95 - 1.35						
			-			-		Bred Ewes:wool	1 - 2						
25-Oct-22	Olds Auction www.oldsauktion.com	30-50	-	1.42 - 1.93	70-80	-	1.75 - 1.80	90-100	-	1.51 - 1.61	Ewes	0.60 - 1.21	356 (incl.goats)		
		50-60	-	1.61 - 1.71	80-90	-	1.56 - 1.89	100-110	-	1.57 - 1.62	Rams	1.05 - 1.28			
		60-70	-	1.93 - 2.04				110+	-	1.35 - 1.50	Bred Ewes	- - -			
22-Oct-22	Picture Butte www.picturebutteauction.ca							Feeder	-	1.41 - 1.77	Slaughter Ewes	0.90 - 1.10	-		
								Slaughter	-	1.44 - 1.67	Feeder Ewes	- - -			
											Ewe&lamb(s)	- - -			
											Bred ewes	- - -			
										Rams	- - -				

Ontario Live Animal Markets

24-Oct-22	OSI www.ontariosheep.org	0-50	39	2.48 - 3.08	65-80	216	2.58 - 2.90	95-110	139	2.28 - 2.45	Sheep	1.00 - 1.91	1048
		50-64	93	2.575 - 3.01	80-95	127	2.20 - 2.70	110+	0	0 - 0.00			
25-Oct-22	OLEX www.ontariosheep.org	0-50	93	2.75 - 3.05	65-79	284	2.38 - 2.90	95-109	570	1.85 - 2.17	Sheep	1.00 - 1.58	2375
		50-64	133	2.03 - 2.98	80-94	457	2.00 - 2.35	110+	298	1.75 - 1.94			
24-Oct-22	Embrun www.ontariosheep.org	0-50	8	1.00 - 1.75	65-79	168	2.1 - 2.67	95-109	51	2 - 2.25	Sheep	0.69 - 1.18	555
		50-64	56	2.25 - 2.60	80-94	181	2.25 - 2.57	110+	17	2.07 - 2.65			
20-Oct-22	Brussels www.ontariosheep.org	0-50	7	2.85 - 3.15	65-79	84	2.39 - 3.38	95-109	212	1.99 - 2.24	Sheep	1.28 - 2.00	657
		50-64	11	2.825 - 3.10	80-94	200	2.05 - 2.76	110+	51	2 - 2.14			

Alberta Lamb Producers does not endorse individual markets or verify prices provided.

Trends* in auction price for heavy lambs in Alberta



— 2022 — 2021 — 2020 — 2019 — 2018 — 5 yr ave

*Due to differences among auctions, prices are reported as 'trends' rather than averages.
This graph is updated on weeks with two or more markets reporting prices.