

**Alberta Live Animal Markets: Visit individual market websites for more information about applicable auction fees and upcoming sales.**

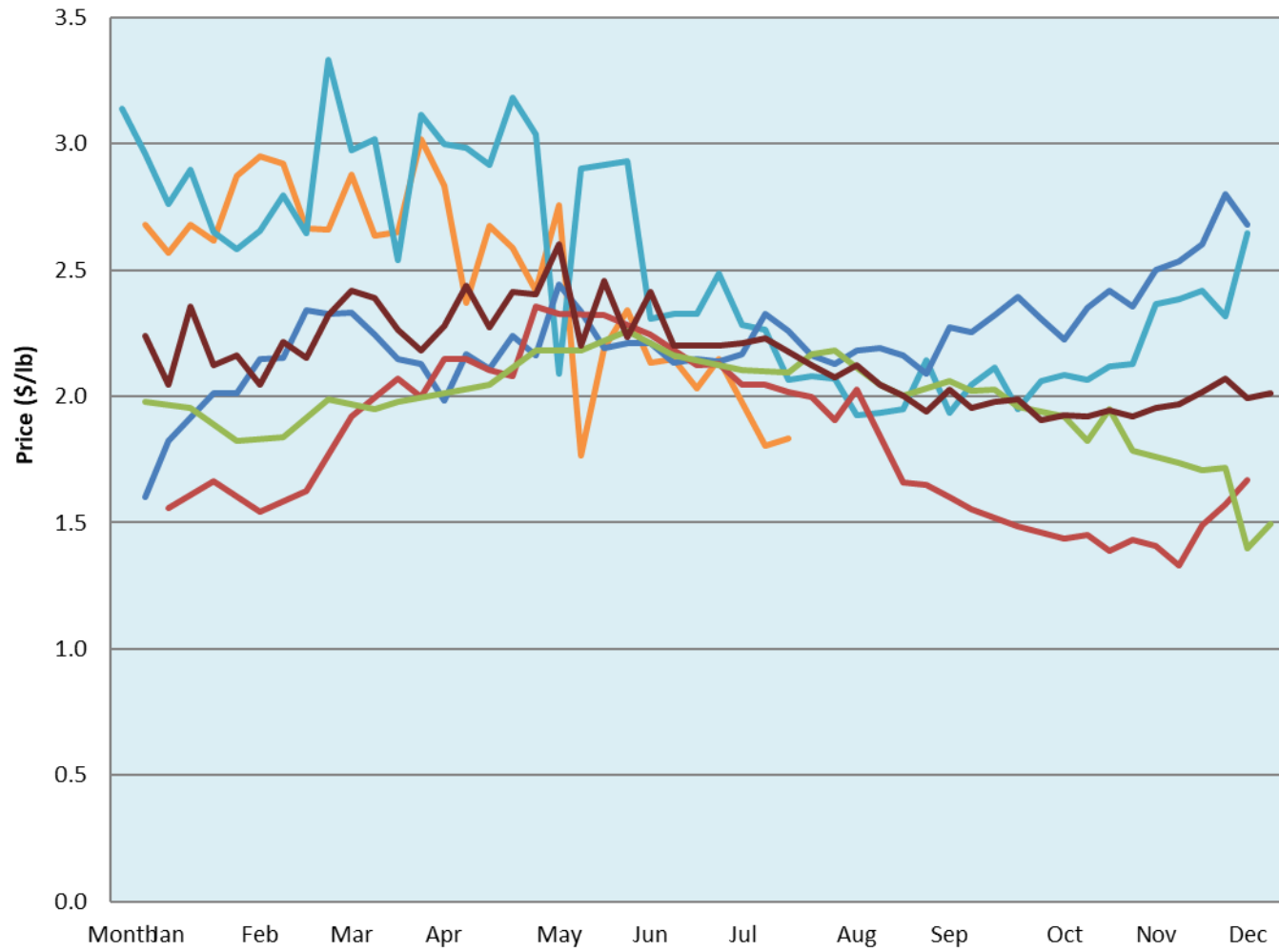
Date	Sale	Lambs (\$/lb)			Lambs (\$/lb)			Lambs (\$/lb)			Sheep(\$/lb): Bred ewes \$/hd		Total Head		
		Weight (lbs)	Head	low - high	Weight (lbs)	Head	low - high	Weight (lbs)	Head	low - high	low - high	low - high			
25-Jul-22	Beaver Hill <a href="http://www.beaverhillauctions.com">www.beaverhillauctions.com</a>	0-54: wool	-	1.60 - 2.10	70-85: wool	-	1.75 - 2.10	86-105:wool	-	1.75 - 2.00	Ewes: wool	0.85 - 1.41	877		
		0-54: hair	-	1.45 - 2.05				86-105:hair			-	1.70 - 1.95		Ewes: hair	1.00 - 1.60
		55-69: wool	-	1.80 - 2.10				106+:wool			-	1.59 - 2.20		Rams: wool	0.95 - 1.65
		55-69: hair	-	1.70 - 1.90	70-85: hair	-	1.60 - 2.05	106+:hair	-	1.00 - 1.90	Rams: hair	1.40 - 1.65			
											Bred Ewes	0.00 - 0.00			
										Ewe&Lamb(s)	0.00 - 0.00				
No sale this week	VJV Westlock <a href="http://www.vjvauction.com">www.vjvauction.com</a>	0-69: wool	-	- - -	70-85: wool	-	- - -	86-105: wool	-	- - -	Ewes: wool	- - -	-		
								86-105: hair	-	- - -	Ewes: hair	- - -			
											106+: wool	- - -			
		0-69: hair	-	- - -	70-85: hair	-	- - -	106+: hair	-	- - -	Rams: wool	- - -			
											Rams: hair	- - -			
									Bred Ewes:wool	- - -					
26-Jul-22	Olds Auction <a href="http://www.oldsauktion.com">www.oldsauktion.com</a>	30-50	-	1.84 - 2.07	70-80	-	1.74 - 2.36	90-100	-	1.76 - 2.14	Ewes	0.76 - 1.08	207  (incl.goats)		
		50-60	-	1.84 - 2.28	80-90	-	1.76 - 2.19	100-110	-	1.75 - 2.32	Rams	1.04 - 1.27			
		60-70	-	1.82 - 2.61				110+	-	1.81 - 2.32	Bred Ewes	- - -			
23-Jul-22	Picture Butte <a href="http://www.picturebutteauction.ca">www.picturebutteauction.ca</a>							Feeder	-	1.67 - 2.53	Slaughter Ewes	0.61 - 1.76	-		
								Slaughter	-	1.22 - 1.85	Feeder Ewes	- - -			
											Ewe&lamb(s)	1.30 - 2.25			
											Bred ewes	- - -			
										Rams	1.19 - 1.81				

**Ontario Live Animal Markets**

25-Jul-22	OSI <a href="http://www.ontariosheep.org">www.ontariosheep.org</a>	0-50	18	2.15 - 2.75	65-80	196	2.15 - 2.41	95-110	80	1.925 - 2.15	Sheep	0.90 - 1.75	1405
		50-64	53	2.15 - 2.70	80-95	198	2.08 - 2.23	110+	86	1.76 - 1.90			
26-Jul-22	OLEX <a href="http://www.ontariosheep.org">www.ontariosheep.org</a>	0-50	41	2.10 - 3.33	65-79	295	2.34 - 2.80	95-109	543	2.00 - 2.20	Sheep	1.23 - 1.85	2328
		50-64	206	2.43 - 2.90	80-94	592	2.00 - 2.33	110+	201	1.65 - 1.95			
25-Jul-22	Embrun <a href="http://www.ontariosheep.org">www.ontariosheep.org</a>	0-50	7	1.05 - 1.15	65-79	220	2.2 - 2.65	95-109	41	1.65 - 2.80	Sheep	0.49 - 1.00	536
		50-64	30	2.10 - 2.64	80-94	189	2.1 - 2.75	110+	10	1.02 - 2.26			
21-Jul-22	Brussels <a href="http://www.ontariosheep.org">www.ontariosheep.org</a>	0-50	16	2.525 - 2.65	65-79	32	2.075 - 2.80	95-109	28	2.15 - 2.23	Sheep	1.30 - 2.25	304
		50-64	23	2.25 - 2.75	80-94	63	2.3 - 2.60	110+	33	1.84 - 1.95			

**Alberta Lamb Producers does not endorse individual markets or verify prices provided.**

### Trends\* in auction price for heavy lambs in Alberta



— 2022   
 — 2021   
 — 2020   
 — 2019   
 — 2018   
 — 5 yr ave

\*Due to differences among auctions, prices are reported as 'trends' rather than averages.  
 This graph is updated on weeks with two or more markets reporting prices.