

Alberta Live Animal Markets: Visit individual market websites for more information about applicable auction fees and upcoming sales.

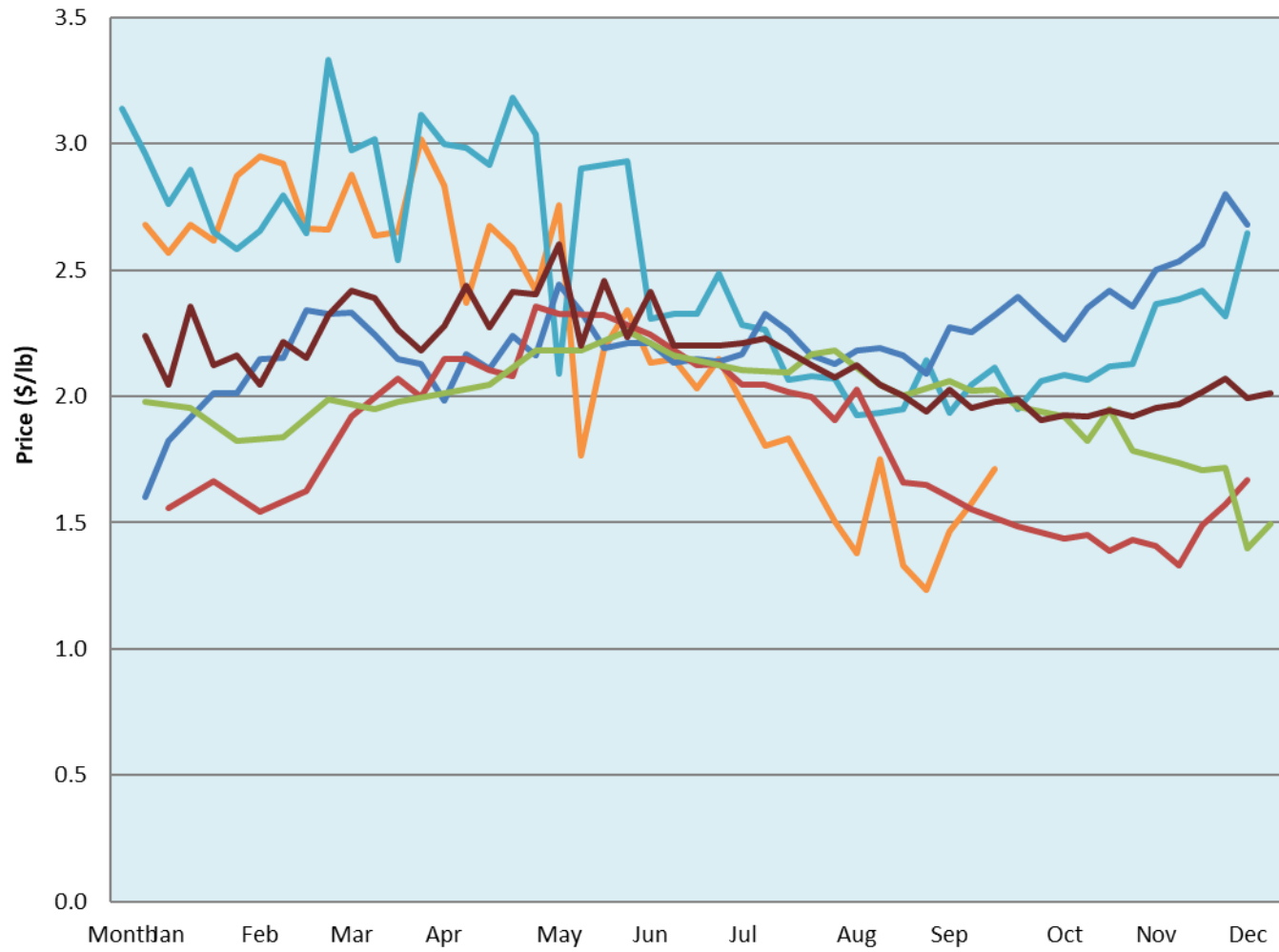
Date	Sale	Lambs (\$/lb)			Lambs (\$/lb)			Lambs (\$/lb)			Sheep(\$/lb): Bred ewes \$/hd		Total Head		
		Weight (lbs)	Head	low - high	Weight (lbs)	Head	low - high	Weight (lbs)	Head	low - high	low - high				
26-Sep-22	Beaver Hill www.beaverhillauctions.com	0-54: wool	-	1.80 - 2.50	70-85: wool	-	1.75 - 2.34	86-105:wool	-	1.60 - 1.98	Ewes: wool	0.90 - 1.55	1332		
		0-54: hair	-	1.60 - 2.10				86-105:hair			-	1.50 - 1.95		Ewes: hair	0.90 - 1.55
		55-69: wool	-	2.00 - 2.49				106+:wool			-	1.55 - 1.86		Rams: wool	0.90 - 1.80
		55-69: hair	-	1.80 - 2.30	70-85: hair	-	1.74 - 2.00	106+:hair	-	0.90 - 1.75	Rams: hair	1.12 - 1.70			
											Bred Ewes	1.90 - 2.75			
										Ewe&Lamb(s)	0.00 - 0.00				
No sale this week	VJV Westlock www.vjvauction.com	0-69: wool	-	- - -	70-85: wool	-	- - -	86-105: wool	-	- - -	Ewes: wool	- - -	-		
								86-105: hair	-	- - -	Ewes: hair	- - -			
									106+: wool	-	- - -	Rams: wool		- - -	
		0-69: hair	-	- - -	70-85: hair	-	- - -	106+: hair	-	- - -	Rams: hair	- - -			
											Bred Ewes:wool	- - -			
									Ewe&Lamb:hair	- - -					
27-Sep-22	Olds Auction www.oldsauktion.com	30-50	-	1.9 - 1.93	70-80	-	2.02 - 2.47	90-100	-	1.78 - 2.12	Ewes	0.75 - 1.34	287 (incl.goats)		
		50-60	-	1.61 - 2.41	80-90	-	1.91 - 2.10	100-110	-	1.68 - 1.91	Rams	0.60 - 1.06			
		60-70	-	2.07 - 2.45				110+	-	1.51 - 1.76	Bred Ewes	- - -			
24-Sep-22	Picture Butte www.picturebutteauction.ca							Feeder	-	1.65 - 1.91	Slaughter Ewes	0.88 - 1.12	-		
								Slaughter	-	1.72 - 1.88	Feeder Ewes	- - -			
											Ewe&lamb(s)	- - -			
											Bred ewes	- - -			
										Rams	0.60 - 1.06				

Ontario Live Animal Markets

26-Sep-22	OSI www.ontariosheep.org	0-50	13	1.50 - 2.90	65-80	245	2.49 - 2.78	95-110	285	1.7 - 2.01	Sheep	0.88 - 1.60	1673
		50-64	209	2.2 - 2.90	80-95	49	2.10 - 2.45	110+	59	1.65 - 1.90			
27-Sep-22	OLEX www.ontariosheep.org	0-50	93	2.75 - 3.05	65-79	284	2.38 - 2.90	95-109	570	1.85 - 2.17	Sheep	1.00 - 1.58	2375
		50-64	133	2.03 - 2.98	80-94	457	2.00 - 2.35	110+	298	1.75 - 1.94			
26-Sep-22	Embrun www.ontariosheep.org	0-50	11	1.05 - 1.20	65-79	146	2.25 - 2.45	95-109	52	2.1 - 2.40	Sheep	0.70 - 1.25	460
		50-64	64	2.05 - 2.45	80-94	106	2.2 - 2.50	110+	46	1.65 - 1.98			
22-Sep-22	Brussels www.ontariosheep.org	0-50	15	1.95 - 2.65	65-79	91	2 - 2.54	95-109	161	1.65 - 1.80	Sheep	0.70 - 1.85	493
		50-64	23	2.15 - 2.60	80-94	94	1.71 - 2.01	110+	1	1.69 - 1.69			

Alberta Lamb Producers does not endorse individual markets or verify prices provided.

Trends* in auction price for heavy lambs in Alberta



— 2022 — 2021 — 2020 — 2019 — 2018 — 5 yr ave

*Due to differences among auctions, prices are reported as 'trends' rather than averages.
This graph is updated on weeks with two or more markets reporting prices.