

Alberta Live Animal Markets: Visit individual market websites for more information about applicable auction fees and upcoming sales.

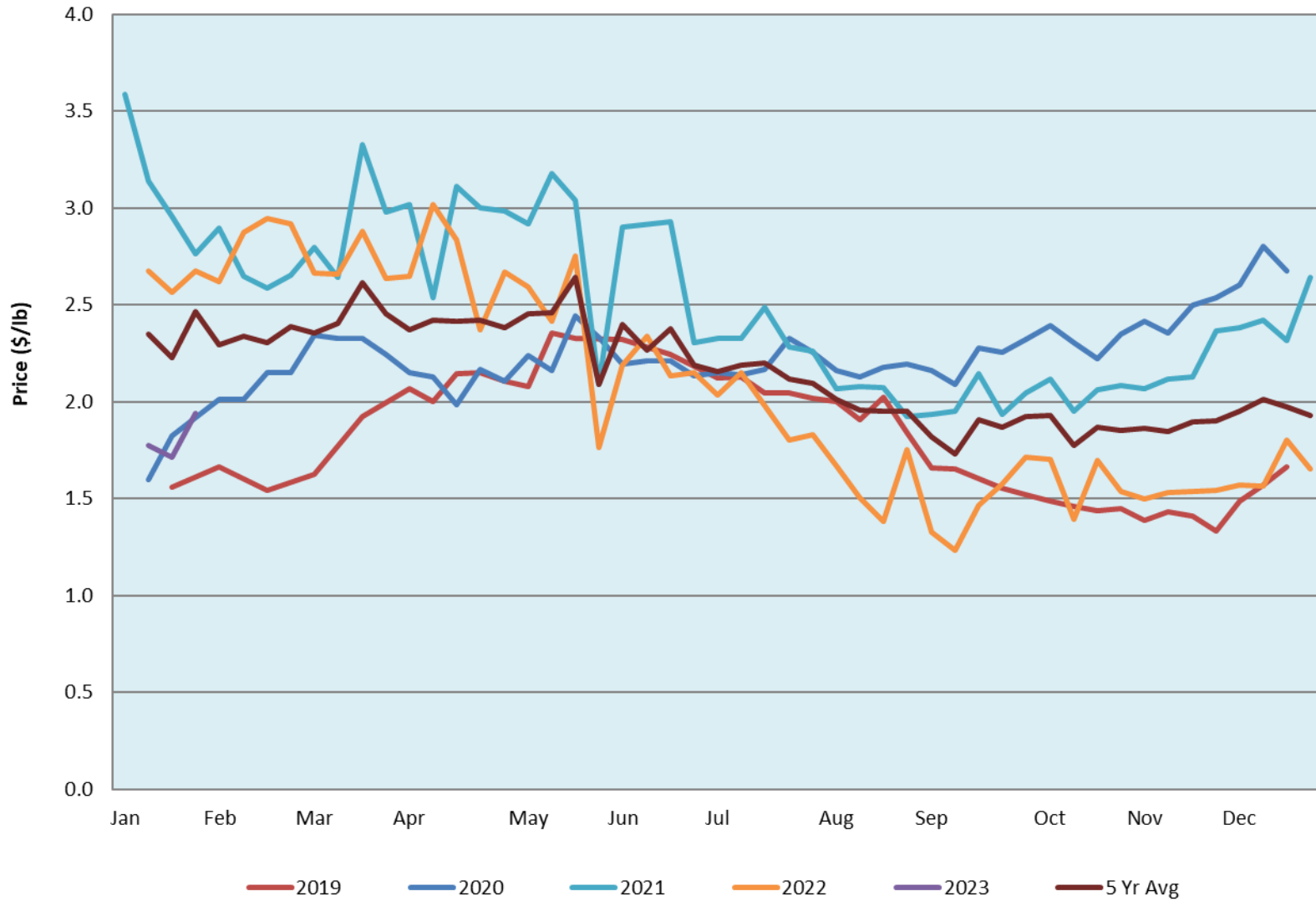
Date	Sale	Lambs (\$/lb)			Lambs (\$/lb)			Lambs (\$/lb)			Sheep(\$/lb): Bred ewes \$/hd		Total Head		
		Weight (lbs)	Head	low - high	Weight (lbs)	Head	low - high	Weight (lbs)	Head	low - high	low - high				
23-Jan-23	Beaver Hill www.beaverhillauctions.com	0-54: wool	-	2.00 - 2.50	70-85: wool	-	2.00 - 2.53	86-105:wool	-	1.90 - 2.30	Ewes: wool	1.08 - 1.65	2055		
		0-54: hair	-	1.60 - 2.26				86-105:hair			-	1.80 - 2.05		Rams: wool	1.04 - 1.80
		55-69: wool	-	2.22 - 2.50	70-85: hair	-	1.80 - 2.35	106+:wool	-	1.80 - 2.26	Rams: hair	0.90 - 1.71			
		55-69: hair	-	2.00 - 2.33				106+:hair			-	0.95 - 1.91		Bred Ewes	1.95 - 2.50
			-								-			Ewe&Lamb(s)	0.00 - 0.00
No sale this week	VJV Westlock www.vjvauction.com	0-69: wool	-	- - -	70-85: wool	-	- - -	86-105: wool	-	- - -	Ewes: wool	- - -	-		
			-			-		86-105: hair	-	- - -	Ewes: hair	- - -			
			-			-			106+: wool	-	- - -	Rams: wool		- - -	
		0-69: hair	-	- - -	70-85: hair	-	- - -	106+: hair	-	- - -	Rams: hair	- - -			
			-			-				-	- - -	Bred Ewes:wool		- - -	
24-Jan-23	Olds Auction www.oldsauktion.com	30-50	-	2.65 - 3.37	70-80	-	2.5 - 2.88	90-100	-	2 - 2.18	Ewes	1.08 - 1.41	240 (incl.goats)		
		50-60	-	2.5 - 3.96	80-90	-	2.24 - 2.71	100-110	-	1.79 - 1.90	Rams	1.04 - 1.16			
		60-70	-	2.62 - 3.23				110+	-	1.64 - 1.86	Bred Ewes	- - -			
21-Jan-23	Picture Butte www.picturebutteauction.ca							Feeder	-	2.08 - 2.26	Slaughter Ewes	1.03 - 1.10	-		
								Slaughter	-	2 - 2.09	Feeder Ewes	- - -			
											Ewe&lamb(s)	- - -			
											Bred ewes	- - -			
										Rams	1.35 - 1.45				

Ontario Live Animal Markets

23-Jan-23	OSI www.ontariosheep.org	0-50	20	2.05 - 2.05	65-80	86	2.85 - 3.08	95-110	87	2.1 - 2.45	Sheep	1.00 - 2.05	713
		50-64	34	2.05 - 2.75	80-95	119	2.61 - 2.91	110+	49	1.99 - 2.17			
24-Jan-23	OLEX www.ontariosheep.org	0-50	68	2.30 - 3.00	65-79	257	2.43 - 2.88	95-109	658	1.93 - 2.18	Sheep	1.05 - 2.00	2197
		50-64	164	2.35 - 2.88	80-94	381	2.00 - 2.45	110+	235	1.70 - 0.02			
23-Jan-23	Embrun www.ontariosheep.org	0-50	0	0.00 - 0.00	65-79	41	3.25 - 3.50	95-109	30	2.7 - 3.00	Sheep	1.00 - 1.40	186
		50-64	17	2.30 - 3.70	80-94	38	3.2 - 3.80	110+	27	2.3 - 2.70			
19-Jan-23	Brussels www.ontariosheep.org	0-50	2	0.5 - 3.10	65-79	142	2.65 - 3.11	95-109	61	2.3 - 2.39	Sheep	1.65 - 2.10	465
		50-64	42	3.15 - 3.30	80-94	117	2.4 - 2.78	110+	35	2.1 - 2.15			

Alberta Lamb Producers does not endorse individual markets or verify prices provided.

Trends* in Auction Price for Heavy Lambs in Alberta



*Due to differences among auctions, prices are reported as 'trends' rather than averages.
This graph is updated on weeks with two or more markets reporting prices.