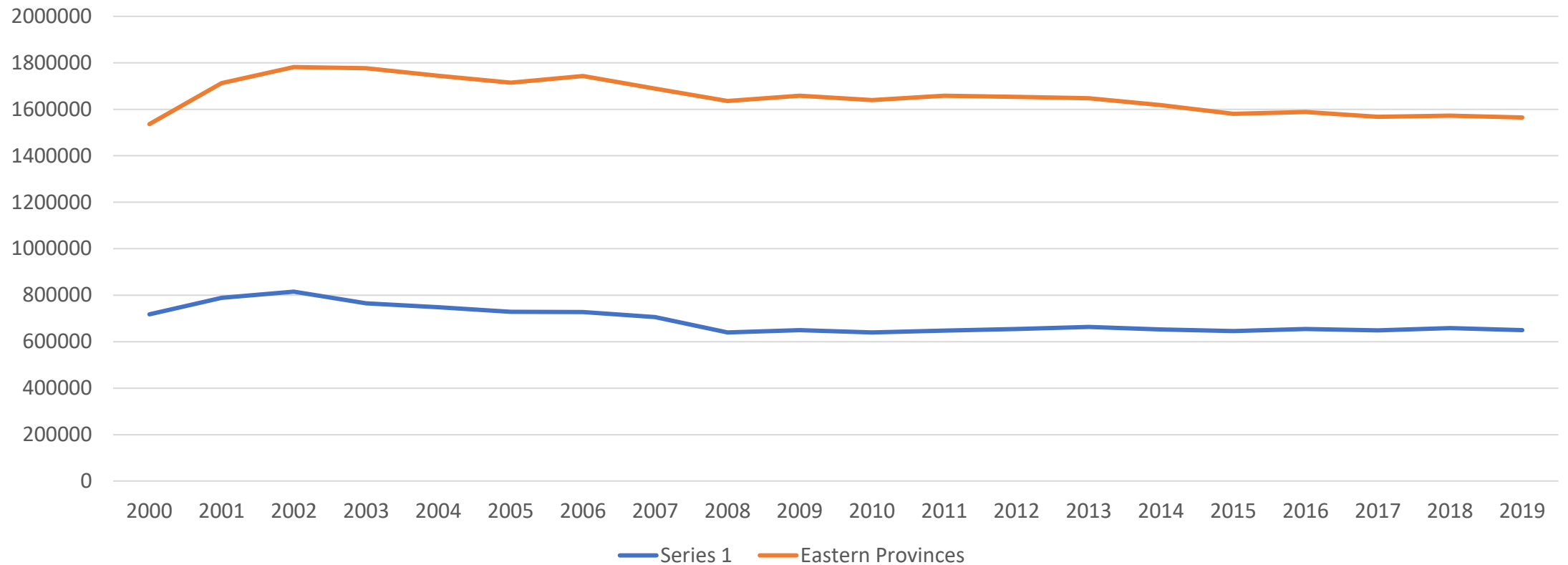


Canadian Sheep Inventory January 2 (2000-2019)

<https://www150.statcan.gc.ca/t1/tbl1/en/tv.action?pid=3210014101&pickMembers%5B0%5D=1.9&cubeTimeFrame.startYear=2000&cubeTimeFrame.endYear=2019&referencePeriods=20000101%2C20190101>

Chart Title

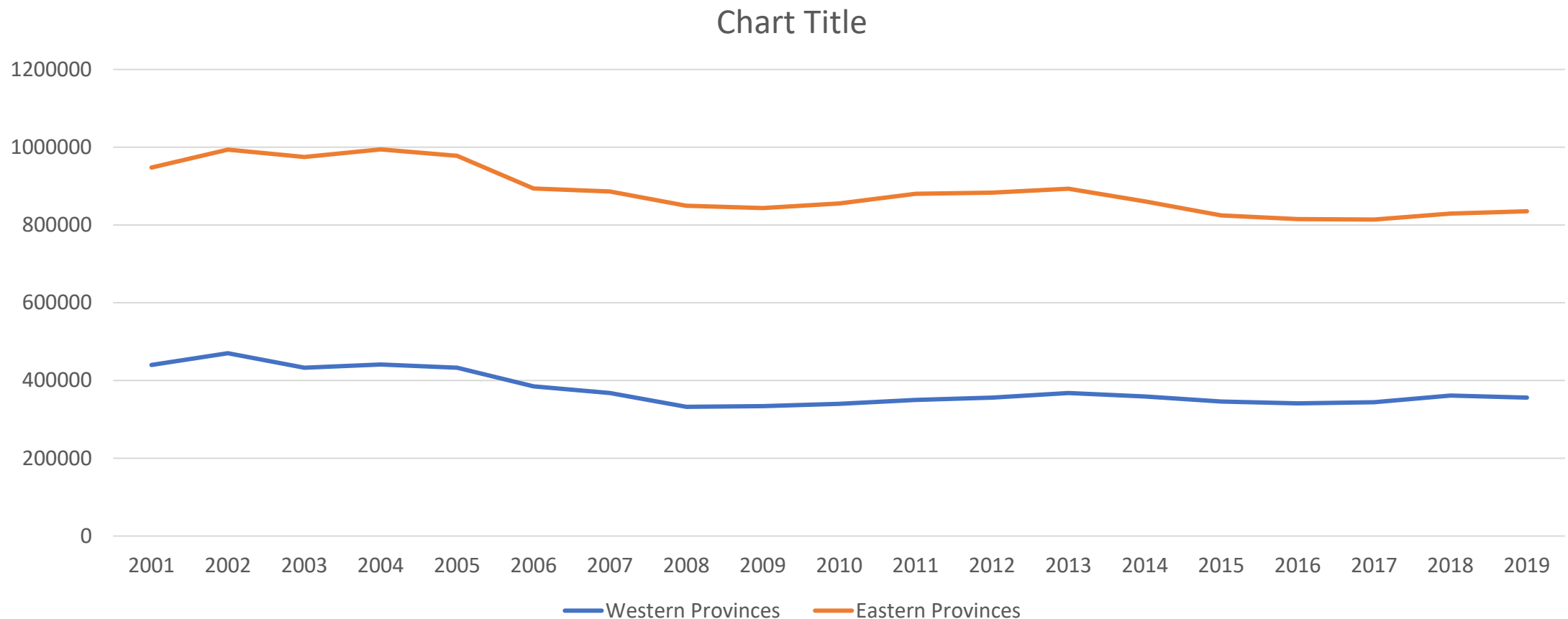


Canadian ewe population

- Stats Canada no longer gives us that instead we get the sheep and lamb population
- The only time it's separated out is for the census.

Canadian Sheep & Lamb Inventory – January 1 (2000-2019)

<https://www150.statcan.gc.ca/t1/tbl1/en/tv.action?pid=3210014101>



of sheep farmers and average sheep per farm 1986-2016

<https://www150.statcan.gc.ca/t1/tbl1/en/cv.action?pid=3210042501>

	1986	1996	2001	2006	2011	2016
E. Canada	5761/67	5240/81	5945/107	5296/124	5284/109	4627/129
W. Canada	5178/61	6550/67	7287/86	5735/84	4827/98	4768/95
Total	10939/64	11790/73	13232/95	11031/104	10111/110	9390/112

W. Canada includes Yukon and NWT

World Production 2018 (metric tonnes)

In 2012, Canada was in
62nd producing 16,682
MT

<http://www.fao.org/faostat/en/#data/QL>

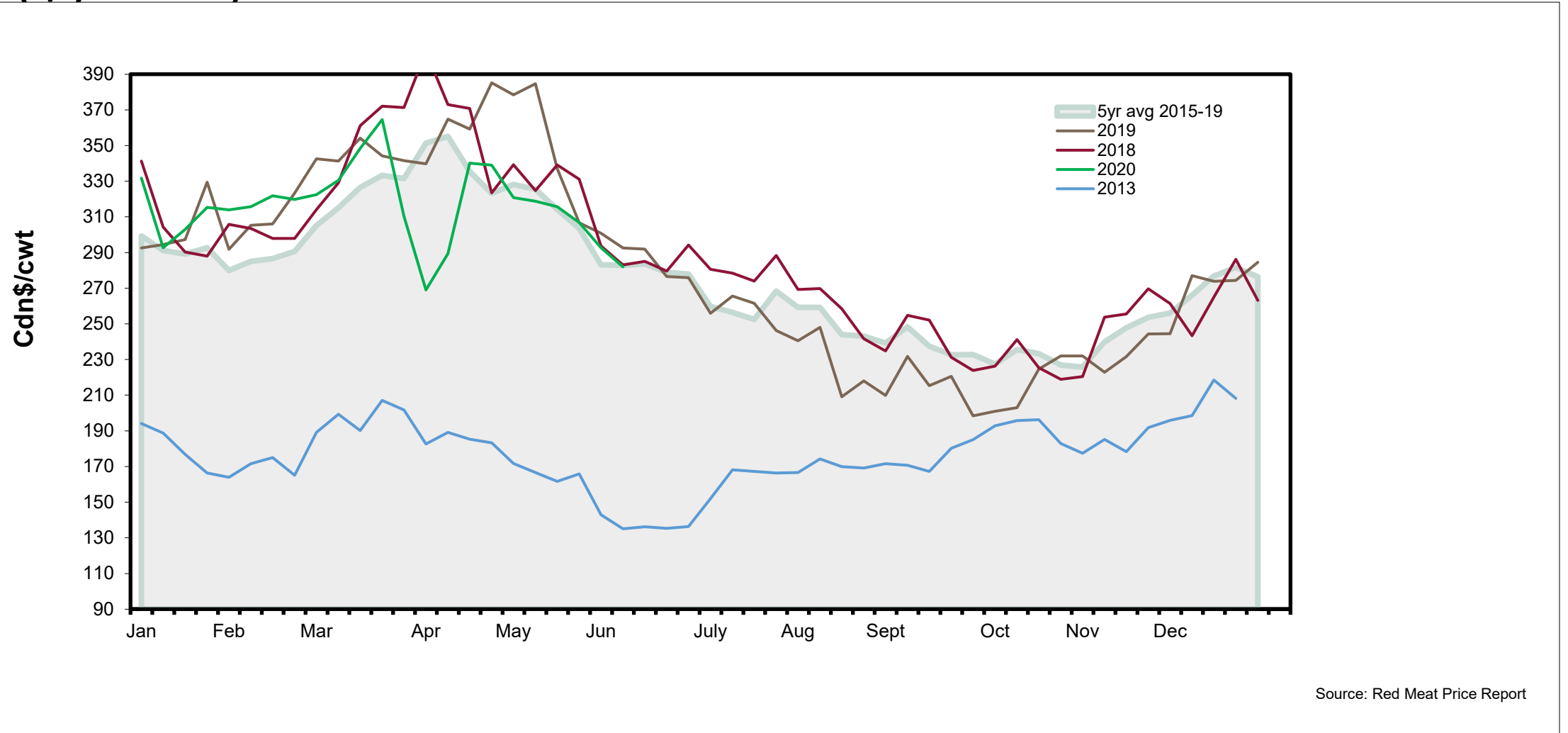
Rank	Country	Quantity (MT)
1.	China	2,422,857
2.	Australia	735,009
3.	New Zealand	470,813
4.	Turkey	362,560
5.	Algeria	325,008
6.	Iran	320,678
7.	United Kingdom	289,000
8.	Sudan	264,000
9.	India	229,834
10.	Russia	205,079
30.	United States	71,758
65.	Canada	15,840

Canadian Wool Production and Value 2006 – 2018

<https://www150.statcan.gc.ca/t1/tbl1/en/tv.action?pid=3210014201&pickMembers%5B0%5D=1.1&cubeTimeFrame.startYear=2013&cubeTimeFrame.endYear=2018&referencePeriods=20130101%2C20180101>

Year	Wool purchased 000kg	Wool price \$/kg	Farm Value \$000
2006	1,255.2	0.66	865
2007	1,268.5	0.72	955
2008	1,127.1	0.66	776
2009	1,138.4	0.63	755
2010	1,180.8	0.86	1,062
2011	1,258.8	1.25	1,641
2012	1,175.3	1.24	1,519
2013	1,198.8	1.24	1,545
2014	1,206.9	1.36	1,714
2015	1,206.6	1.54	1,938
2016	1,203.4	1.38	1,723
2017	1,153.3	1.12	1,353
2018	1,263.7	1.10	1,437

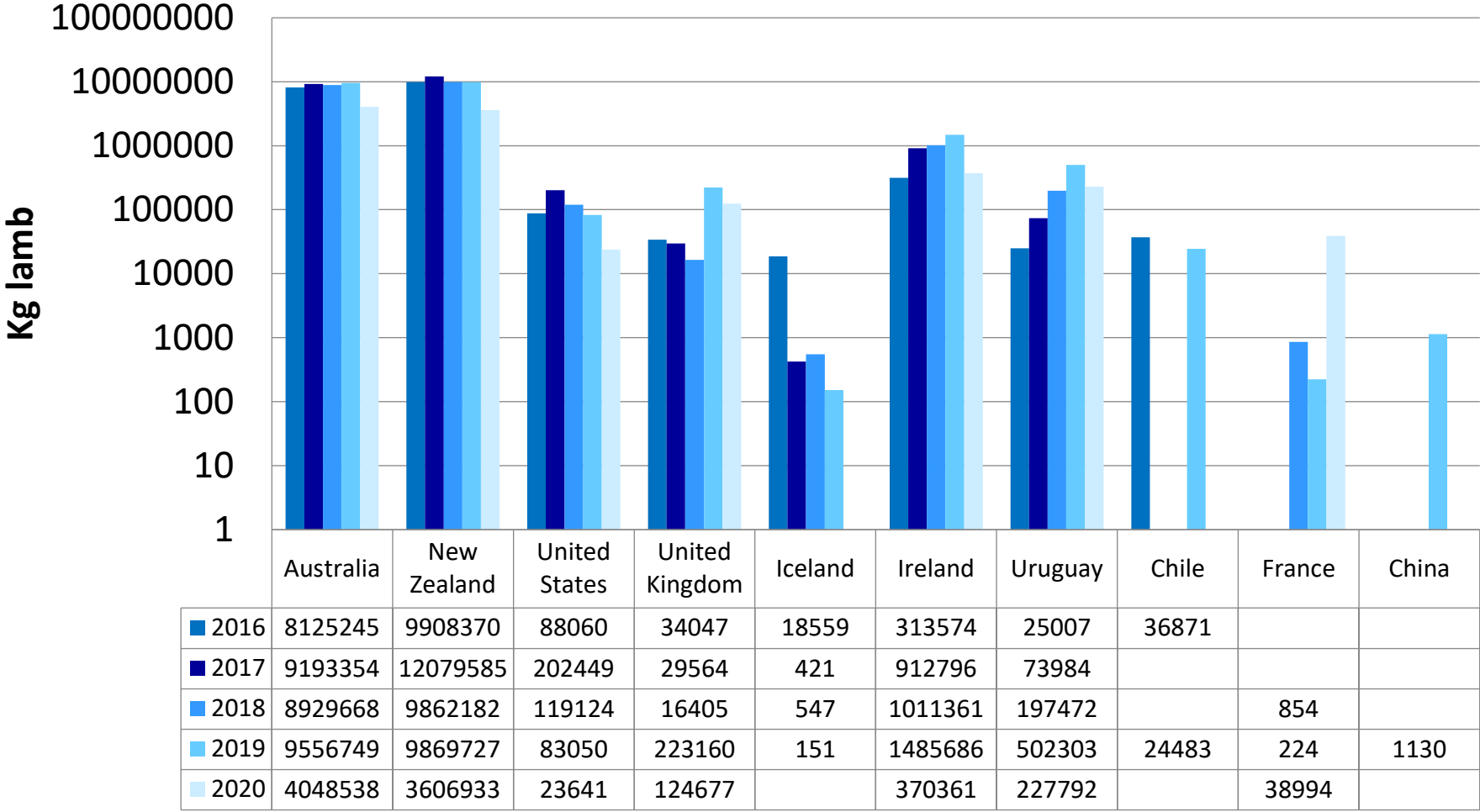
Seasonal lamb prices – Ontario Lambs to 79 lb (\$/cwt)



Source: Red Meat Price Report

Lamb Imported 2016-2020 (kg)

logarithmic scale to be able to see all countries we import from



Canada Lamb and Sheep Slaughter Federal and Provincial 2012 -

Year	West		Ontario		Quebec/Atlantic		Canada	
	Fed	Prov	Fed	Prov	Fed	Prov	Fed	Prov
2012	64,820 (40%)	42,069 (12%)	20,325 (13%)	242,410 (68%)	75,096 (47%)	74,406 (21%)	160,241	358,885
2013	71,909 (43%)	49,555 (12%)	23,557 (14%)	278,180 (70%)	73,547 (55%)	72,046 (18%)	169,013	399,781
2014	68,613 (40%)	50,150 (12%)	29,992 (17%)	289,356 (71%)	73,077 (43%)	69,587 (17%)	171,682	409,093
2015								
2016	104,750 (58%)	305,821 (82%)			76,756 (42%)	65,473 (18%)	181,506	371,294
2017	96,054 (56%)	305,253 (82%)			74,522 (44%)	68,223 (18%)	170,576	373,476
2018	92,027 (53%)	301,426 (84%)			81,422 (47%)	59,557 (16%)	173,449	360,983

They've changed the way this is reported. Ontario is now included in the West data. No longer able to compare apples to apples -

Per Capita Protein Disappearance (kg per person, per year)

Year	Lamb & Mutton	Beef	Pork	Chicken
2008	1.17	29.75	23.89	30.77
2009	1.16	28.28	23.57	31.12
2010	1.09	27.88	22.05	30.47
2011	1.06	27.27	21.50	29.99
2012	0.97	27.63	22.32	29.77
2013	1.00	27.40	20.92	30.07
2014	1.05	26.50	20.58	31.10
2015	1.05	24.42	23.23	31.96
2016	1.06	25.42	20.78	32.67
2017	1.11	25.29	20.79	33.21
2018	1.07	24.55	21.70	34.67
2019	0.98	24.26	22.16	35.06